



ON *this* MONTH

Message

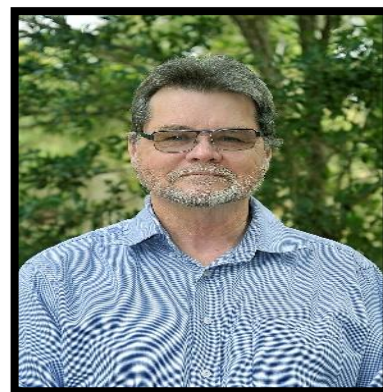
From the Principal

Welcome back to 2021!

Yarranlea Primary School

Australia Day ----- 26

School Starts Back ----- 27



David Costin – Principal

AUSTRALIA DAY – JANUARY 26

Australia Day is the day to reflect, respect and celebrate. We reflect on the resilience of the First Nations Australians. We pay respect to our heroic frontline workers. We celebrate the Australian spirit, our mateship and our sense of community. We find optimism hope as we look to the future. Australia Day 2021 is different due to COVID-19. As we face challenges, 26 January is still a day to reflect on and celebrate hope and solidarity.

**PLEASE NOTE CHANGES TO DROP OFF
& PICK UP AREAS**



Drop Off & Pick Up Procedures



Prep – Year 1 – For Safety

Drop off & Pick Up from this entrance as per photograph below for Term 1 only



PLEASE NOTE:

Due to the recent outbreak, our School COVID risk management plan is currently in place. This policy does indicate that no parents will be able to enter onto our school site as we create our own “bubble”. However, we are taking a slightly different approach in 2021. On the first day of the school term, we are welcoming **new parents and their children** onto the school site. They will be able to take photos for their special day.

Be aware changes may occur to drop off and pick up, due to Covid which will be determined by the conditions advised from the School Board, Qld Chief Medical Officer, Griffith University Management plan and Independent Schools Queensland.



Entry to the School

With building now underway, this necessitates changes to drop off and pick up of children. The following information is critical for the general safety of your children and yourself.

Year 2 to Year 6 - For Safety

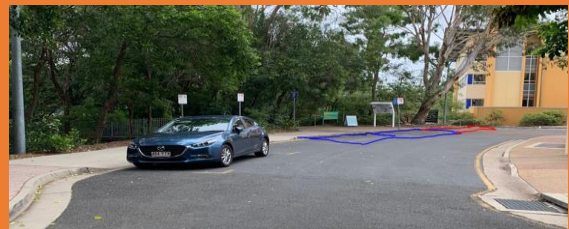
1. **Y2 to Y6 - Parents drop off** their children at front gate. We are still conscious that social distancing between adults is required when on Griffith University property.
2. **Y2 to Y6 pick up** will be at the **RED & BLUE** zone – Teachers will deliver and supervise children in this area in the afternoons until parents arrive.

Drop off and Pick Up from **RED & BLUE ZONES** pictured in the aerial shot provided as shown in diagrams below:



Street View/Social Science Road – Drop off and Pick Up Area

RED and BLUE Zones – Drop Off & Pick Up



Front Entrance to the School



First Day of School:

WHAT TO BRING:

- MORNING TEA/LUNCH
- WATER BOTTLE
- HAT

PLEASE NAME ALL YOUR CHILD'S BELONGINGS



SWIMMING:

WHAT TO BRING:

1. SWIMMING BAG
2. SUN SHIRT
3. BATHING CAP
4. GOGGLES
5. PACK THINGS OR SANDALS (EASY FOR THE CHILD TO TAKE OFF) FOR YOUR CHILD TO WEAR TO THE POOL

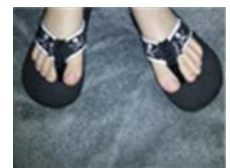


NOTE TO ALL YARRANLEA COMMUNITY

NO PARKING ALLOWED in the psychology carparks



**STARTS MONDAY
8TH FEBRUARY
1.30PM TO 2.15PM**



BACK TO SCHOOL

Young people can feel a range of emotions when they are heading back to school, which include feelings of excitement, anticipation and nerves. Some students can adjust to the changes and settle into things quickly. However, some young people may find this a daunting and challenging time. There can be a number of reasons why it might be hard to go school: trying to make new friends, pressure to get the best marks, dealing with bullying, or perhaps going through a mental health.

TIPS FOR PARENTS:

- Talk openly and honestly with them, and let them know that you are concerned.
- Reassure them that you will be there for them, and ask what they need from you.
- Let them know that there is lots of help available.
- Help find an appropriate service, such as a [headspace centre](#) and support them in attending.
- Help them build a support network.

HEALTHY KIDS



IMPORTANT MESSAGE FOR ALL YARRANLEA COMMUNITY

NO NUTS SCHOOL



NO NUT POLICY: The school has children attending who are severely allergic to nuts or nut product, which can trigger a potentially life-threatening reaction. Please do not send any nuts, peanut butter, dip containing nuts or nuts in baked food. Some food packaging says that it does not contain nuts but have been processed on equipment that may contain traces of nuts. These items are OK, unless otherwise advised.

FAREWELL ADAM



Adam is in his final semester for his Bachelor of Secondary Education.

We farewell Adam wishing him well and knowing that he will be an amazing teacher.

Thankyou Adam for your time spent with us at Yarranlea.

